

# Composite Table Algorithm - A Powerful Hybrid Pinch Targeting Method for Various Problems in Water Integration

R. Parand, H. M. Yao, M. O. Tadé and V. Pareek

**Abstract**—Water management has become a very vital issue due to stringent environmental regulations and rising cost of water resources. Pinch analysis provides a conceptual approach for water network synthesis. Targeting is the first stage in most pinch analysis techniques to provide the baseline for detailed water network design. Although Water Cascade Analysis and Material Recovery Pinch Diagram methods have been developed to handle diverse water network problems, Composite Table Algorithm (CTA) is another water pinch targeting tool with its unique combination of both numerical and graphical characteristics. CTA was originally developed for fixed flow rate problems. In this work, the applicability of CTA for various water network problems such as fixed load, mixed fixed load and fixed flow rate, multiple pinch, and threshold problem is discussed. To facilitate, the approach has been programmed in MATLAB and results obtained are validated by comparing with literature.

**Index Terms**—Pinch analysis, pure utility, targeting, water minimization

## I. INTRODUCTION

Environmental sustainability requirement, rising cost of energy, raw material and waste treatment, and increasingly stringent emission regulations are among the factors that encourage the process industries to use process integration as a promising tool for resource conservation. Within the framework of mass integration, water network synthesis can be considered as a special case. Problems are usually considered either as Fixed Load (FL) (mass transfer based) or as Fixed Flow rate (FF) (non-mass transfer based). With some basic data (contaminant concentration and flow rate), the power of water pinch analysis is in its ability to locate minimum utility targets (fresh water consumption and wastewater generation) prior to detailed network design. This provides a base line for any water network to be synthesized.

Pinch targeting methods broadly fall into two classes: graphical and numerical. Although graphical methods provide physical insight to the problem and more understandable by industrial practitioners, numerical methods look at algebraic accuracy and are easily amendable for computer programming. Therefore, these two classes are complementary.

Both graphical and numerical methods were initially developed for FL problems, such as, Limiting Composite

Curve (LCC) [1] and Mass Problem Table (Concentration Interval Table [2], [3], under the assumption that inlet and outlet water flow rate are the same for a particular process. Although this assumption was relaxed by Wang and Smith [4] in their later work, the proposed approach needs tedious procedure to locate a true target. Improved Concentration Interval Table [5] is the extended version of Mass Load Table in order to cope with FF problems. To effectively use this method, limiting data should be at first correctly converted from FF problems to FL problems. Thus, for highly integrated process where, water losses/gains occur extensively, these approaches are very cumbersome. The Source-Sink Composite Curve developed by Dhole *et al.* [6] overcome this limitation to consider global water operations. However, it has been pointed out later [7] that Source-Sink Composite Curve approach results in several local pinch points and not necessarily guarantees the global pinch point location. Therefore, Evolutionary Table method was proposed [7].

Hallele [8] developed Water Surplus Diagram (WSD) which was the first promising tool able to dealing with the FL and FF problems. He also pointed out that Evolutionary Table method cannot handle multiple pinch problems. However, WSD requires an iterative procedure before targets can be achieved. To rectify this shortage, graphical targeting method such as Material Recovery Pinch Diagram (MRPD) [9], [10] was developed by two groups of researchers simultaneously. Later on, several other numerical methods were also proposed, such as, Water Cascade Analysis (WCA) [11] and Algebraic Targeting Method (ATM) [12]. Furthermore, two hybrid, non-iterative methods were also put forward known as Source Composite Curve (SCC) [13] and Composite Table Algorithm (CTA) [14].

CTA has several advantages compared to all forgoing methods highlighted as follows:

- 1) It is more analogous to seminal LCC technique. Hence, CTA can easily be extended to cope with various water network synthesis problems such as multiple utilities and regeneration - reuse/recycle.
- 2) It is the combination of graphical and numerical targeting technique, therefore, provides numerical accuracy as well as physical insight.
- 3) It requires less calculation effort in terms of numerical analysis.

CTA has been used for water reuse/recycle network, regeneration reuse/recycle problem [14], zero liquid discharge network [15] and multiple utilities problem [16] considering fixed flow rate operations. In this article, it will

Manuscript received February 28, 2013; revised June 6, 2013.

The authors are with the Department of Chemical Engineering, Curtin University, GPO Box U1987, Perth, WA 6845 (e-mail: h.yao@curtin.edu.au).

be demonstrated that this approach can address fixed load as well as hybrid problems which combines both fixed load and fixed flow rate operations. Moreover, the applicability of this method for threshold and multiple pinches problems will be shown. It is concluded that CTA also has the capability of addressing various problems in water network syntheses and it can be considered as one of the well-developed targeting techniques the same as WCA and MRPD.

## II. FIXED FLOW RATE OPERATIONS

Fixed flow rate water network consists of processes which are quantity controlled (e.g. cooling towers, boilers, etc.). The main concern for these kinds of operation is the flow rate, not the amount of contaminant picked up. These operations can be represented in sources (outlet streams) and demands (inlet streams) perspective. In this way, inlet and outlet flow rate of particular operation are not necessarily equal and therefore, water losses/gains can be easily taken into account.

Example 1 from Polley and Polley [17] with limiting data given in Table I is adopted. Only final targeting results will be presented in this article due to the lack of space. One can find the detailed procedure of CTA from reference [14]. Before considering reuse/recycle, this network requires 300 ton/h of fresh water flow rate (total flow rates of sinks) and generates 280 ton/h of waste water (total flow rates of sources). A proper network design can see that the requirement for fresh water  $F_{fw}$  is only 70 ton/h and 50 ton/h of waste water  $F_{ww}$  is generated. This represents a 75% of fresh water saving and 18% of original waste water production.

Waste water contaminant concentration also can be calculated via Eq. (1).

$$F_{fw}C_{fw} - F_{ww}C_{ww} = \sum F_j C_j - \sum F_i C_i \quad (1)$$

This equation shows the mass balance over the total system. With the available limiting data and targeting results obtained, the expected waste water concentration  $C_{ww}$  is calculated as 200 ppm.

TABLE I: LIMITING DATA AND TARGETING RESULTS FOR EXAMPLE 1

<b>Limiting Data</b>					
Sink	$F_j$ (ton/h)	$C_j$ (ppm)	Source	$F_i$ (ton/h)	$C_i$ (ppm)
SK1	50	20	SR1	50	50
SK2	100	50	SR2	100	100
SK3	80	100	SR3	70	150
SK4	70	200	SR4	60	250
Total	300		Total	280	
<b>Targeting Results</b>					
$F_{fw}$ (ton/h)	$F_{ww}$ (ton/h)	$C_{pinch}$ (ppm)	$C_{ww}$ (ppm)		
70	50	150	200		

Limiting composite curve can be constructed based on the results of CTA. This is shown in Fig. 1.

Fresh water supply line starts from origin as a pivot and is rotated anticlockwise until touches LCC in the pinch point. Inverse slope of water supply line determines the minimum fresh water requirement. From this graphical representation of CTA, The same targets can be determined.

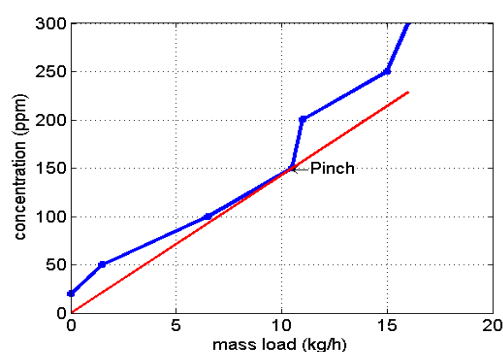


Fig. 1. LCC and water supply line for example 1.

This demonstrates the hybrid characteristic of Composite Table Algorithm. We have programed this approach using MATLAB. Therefore, it can be used conveniently for any problems, even with large complex industrial processes.

## III. FIXED LOAD OPERATIONS

Fixed load water network comprises processes which are quality controlled [17], such as, washing, scrubbing, etc. The main concern for these types of operation is the amount of contaminant mass removal. In this model, each operation has outlet maximum allowable contaminant concentration ( $C_{out}$ ) and inlet concentration ( $C_{in}$ ) specified by the process constraints. The main assumption is that the water flow rate ( $F$ ) keeps as constant throughout the process. Then, the fixed amount of mass load ( $M$ ) will be picked up by water via Eq. (2).

$$M = F(C_{out} - C_{in}) \quad (2)$$

TABLE II: LIMITING DATA, DATA CONVERSION, AND TARGETING RESULTS FOR EXAMPLE 2

FOR EXAMPLE 2

<u>Limiting Data</u>					
Process, $P_p$	$\Delta m_p$ (kg/h)	$C_{in}$ (ppm)	$C_{out}$ (ppm)	$F_p$ (ton/h)	
1	2	0	100	20	
2	5	50	100	100	
3	30	50	800	40	
4	4	400	800	10	
<u>Conversion to FF Model</u>					
Sink	$F_j$ (ton/h)	$C_j$ (ppm)	Source	$F_i$ (ton/h)	$C_i$ (ppm)
P1 <sub>in</sub>	20	0	P1 <sub>out</sub>	20	100
P2 <sub>in</sub>	100	50	P2 <sub>out</sub>	100	100
P3 <sub>in</sub>	40	50	P3 <sub>out</sub>	40	800
P4 <sub>in</sub>	10	400	P4 <sub>out</sub>	10	800
Total	170		Total	170	
<u>Targeting Results</u>					
$F_{fw}$ (ton/h)	$F_{ww}$ (ton/h)	$C_{pinch}$ (ppm)	$C_{ww}$ (ppm)		
90	90	100	455.56		

Please consider Example 2 with limiting data, data conversion to FF model, and targeting results presented in Table II. Initially, Wang and Smith [1] used limiting composite curve for fixed load model to optimize the water network. Later, this problem was targeted by WCA [11] and MRPD [10]. In this study, we will demonstrate that CTA, originally developed for fixed flow rate problems, also can handle fixed load water network if the data transformation is correctly performed.

To convert the data from fixed load to fixed flow rate model, an inlet stream to any process should be considered as a sink and outlet stream from any operation is treated as a source. Generally, all the inlet streams and outlet streams are regarded as sinks and sources.

Once the integrated network is implemented, 47% of water saving is achievable in this example. Note that fresh water and waste water flow rate are the same because of the fixed load model assumption.

LCC created by MATLAB is illustrated in Fig. 2. The last segment of LCC presents the amount of water loss/gain for total network. The inverse slope of this segment is zero which means no water loss or gain for the network.

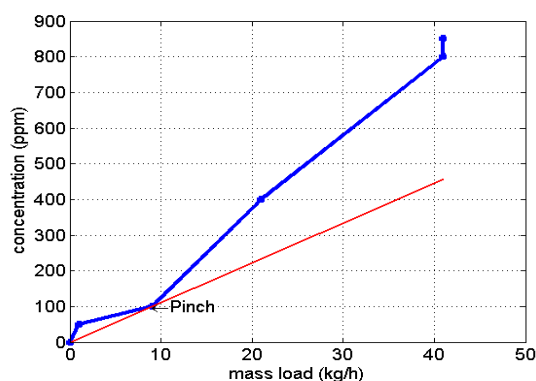


Fig. 2. LCC and water supply line for example 2.

#### IV. COMBINED FF AND FL OPERATIONS

In example 3, the data of examples 1 and 2 are combined to form the new limiting data presented in Table III along with targeting results.

TABLE III: LIMITING DATA AND TARGETING RESULTS FOR EXAMPLE 3

Limiting Data					
Sink	$F_i$ (ton/h)	$C_i$ (ppm)	Source	$F_i$ (ton/h)	$C_i$ (ppm)
P1 <sub>in</sub>	20	0	P1 <sub>out</sub>	20	100
P2 <sub>in</sub>	100	50	P2 <sub>out</sub>	100	100
P3 <sub>in</sub>	40	50	P3 <sub>out</sub>	40	800
P4 <sub>in</sub>	10	400	P4 <sub>out</sub>	10	800
SK1	50	20	SR1	50	50
SK2	100	50	SR2	100	100
SK3	80	100	SR3	70	150
SK4	70	200	SR4	60	250
Targeting Results					
$F_{fw}$ (ton/h)	$F_{ww}$ (ton/h)	$C_{pinch}$ (ppm)	$C_{ww}$ (ppm)		
155	135	100	377.78		

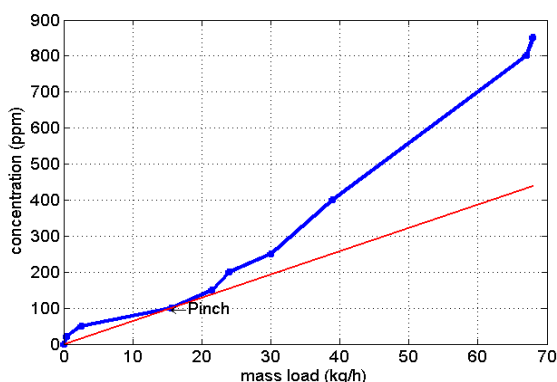


Fig. 3. LCC and water supply line for example 3.

This type of problem was addressed earlier by MRPD method [10]. The consistency of the results from CTA and MRPD is again observed. Please note that the fresh water requirement (155 ton/h) is less than the sum of individual targets for two previous examples (70 + 90 = 160 ton/h). This is because sources in FF model may satisfy inlet stream for FL operation or vice versa. Fig. 3 shows the LCC for this case.

#### V. MULTIPLE PINCH PROBLEMS

Multiple pinch problem is one of the classes of water network synthesis [18]. The ability of CTA method handling this kind of problem is demonstrated through example 4. FF presentation of limiting data and targeting results are listed in Table IV. Sorin and Bédard [7] using Evolutionary Targeting method initially found only one pinch point at 180 ppm concentration. Later several works [8]-[11] addressed this limitation. In fact, CTA also has the same advantages as WCA, MRPD and WSD methods for multiple pinch problems. Furthermore, its non-iterative and hybrid nature may make it even superior to others. One also can find the relevant limiting composite curve in Fig. 4.

TABLE IV: LIMITING DATA AND TARGETING RESULTS FOR EXAMPLE 4

Limiting Data					
Sink	$F_i$ (ton/h)	$C_i$ (ppm)	Source	$F_i$ (ton/h)	$C_i$ (ppm)
SK1	120	0	SR1	120	100
SK2	80	50	SR2	80	140
SK3	80	50	SR3	140	180
SK4	140	140	SR4	80	230
SK5	80	170	SR5	195	250
SK6	195	240			
Targeting Results					
$F_{fw}$ (ton/h)	$F_{ww}$ (ton/h)	$C_{pinch,1}$ (ppm)	$C_{pinch,2}$ (ppm)	$C_{ww}$ (ppm)	
200	120	100	180	299.58	

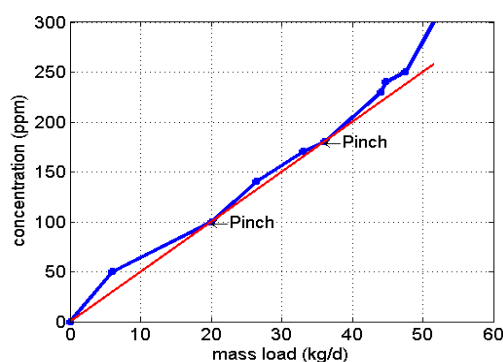


Fig. 4. LCC and water supply line for example 4.

#### VI. THRESHOLD PROBLEMS

Not all problems in the water network synthesis encounter fresh water consumption and waste discharge concurrently. This type of problem is termed as the "threshold problem" [19]. In water network synthesis, the threshold problem falls in to three categories, i.e. zero network discharge with fresh water feed, network generating waste without fresh water feed, and network with no fresh water and discharge. WCA and MRPD methods have been used to address the threshold problems [19], we will apply CTA to achieve the same

targeting. All limiting data for the following sub-sections are adopted from reference [19].

#### A. Threshold Problem with Fresh Water Feed and Zero Discharge

Limiting data listed in Table V has been selected for Example 5. Targeting results are also summarized in Table V and illustrated in Fig. 5.

TABLE V: LIMITING DATA AND TARGETING RESULTS FOR EXAMPLE 5

Limiting Data					
Sink	$F_i$ (ton/h)	$C_i$ (ppm)	Source	$F_i$ (ton/h)	$C_i$ (ppm)
SK1	50	20	SR1	20	20
SK2	20	50	SR2	50	100
SK3	100	400	SR3	40	250
Total	170		Total	130	

Targeting Results			
$F_{fw}$ (ton/h)	$F_{ww}$ (ton/h)	$C_{pinch}$ (ppm)	$C_{ww}$ (ppm)
34	-26	100	N/A

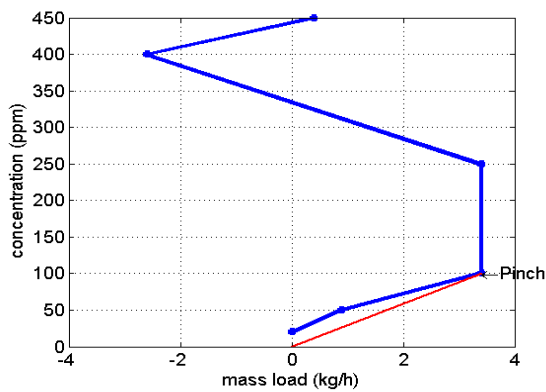


Fig. 5. Infeasible LCC for example 5.

Dissimilar to forgoing problems, LCC points vertically upward and then left between 100-250 ppm and 250-400 ppm concentration, respectively. This means that for the former concentration interval all sources have been reused/recycled to process sinks thoroughly and for the latter concentration region the surplus of process sources is available. However, for the first region of LCC (between 0 and 100 ppm), fresh water is needed to fulfill the mass load constraint. The inverse slope of water supply line (shown as red) presents the amount of fresh water requirement. By inspecting the targeting results carefully, it is revealed that this amount of fresh resource is not sufficient for total system due to negative flow rate of waste water. To rectify this infeasibility the absolute amount of waste water flow rate ( $F_{ww} = 26$  ton/h) should be added to fresh water flow rate ( $F_{fw} = 34$  ton/h). By doing so, the targets have changed to 60 ton/h of fresh water and 0 ton/h of waste water.

To find the pinch point, it is necessary to double check the network with the fresh water source included as one of the process resources. The fourth steps of CTA method for calculating the cumulative mass load is shown in Table VI. All the values for cumulative mass load are negative which means there is no more pinch point. Hence, this network consumes 60 ton/h of fresh water (64% saving) and generates zero discharge (100% saving) and there is no pinch point. These targets completely match those reported in literature[19].

TABLE VI: FEASIBLE CASCADE TABLE ALGORITHM TO FIND THE PINCH POINT FOR EXAMPLE 5

$C_k$ (ppm)	Net. $F_k$ (t/h)	$\Delta m_k$ (kg/h)	Cum. $\Delta m_k$ (kg/h)
0			0
20	-60	-1.2	-1.2
50	-30	-0.9	-2.1
100	-10	-0.5	-2.9
250	-60	-9	-11.6
400	-100	-15	-26.6
(450)	0	(0)	(-26.6)

#### B. Threshold Problem with Waste Disposal Only

The Limiting data, targeting results and LCC for Example 6 are listed in Table VII and shown in Fig. 6.

Targeting results have been compared with reference [19] for verification. Nonetheless, there is only one method involved here instead of two complementary methods used by this reference. As targeted, the network has the potential of 100% fresh water saving and reducing waste water by 2500 g/min equated to 78% after reuse/recycling takes place.

TABLE VII: LIMITING DATA AND TARGETING RESULTS FOR EXAMPLE 6

Limiting Data					
Sink	$F_i$ (g/min)	$C_i$ (ppm)	Source	$F_i$ (g/min)	$C_i$ (ppm)
SK1	1200	120	SR1	500	100
SK2	800	105	SR2	2000	110
SK3	500	80	SR3	400	110
			SR4	300	60
Total	2500		Total	3200	

Targeting Results			
$F_{fw}$ (g/min)	$F_{ww}$ (g/min)	$C_{pinch}$ (ppm)	$C_{ww}$ (ppm)
0	700	60	85.71

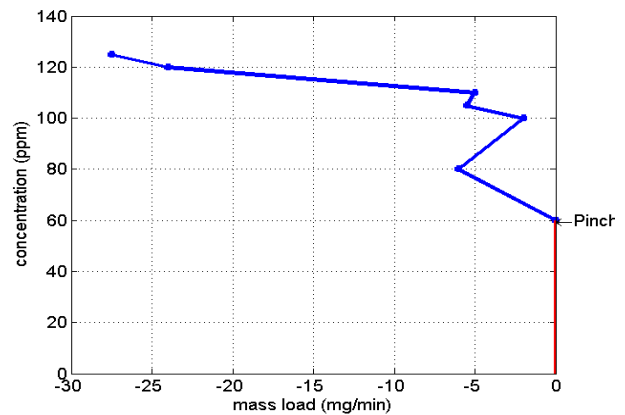


Fig. 6. LCC and water supply line for example 6.

Compared to earlier examples, some uncommon characteristics of LCC need to be clarified. First, LCC locates completely on the left side of mass load vs. concentration diagram. This means that there is surplus of process sources to be reused or recycled to the process sinks and no fresh water is needed for total network. The vertical water supply line (in red), whose inverse slope targets the minimum fresh water requirement (0 ton/h), supports the former argument. Moreover, unlike normal problems, the trend of LCC is not always in one direction. For the segments where LCC points left, it indicates the surplus of process source for process demands within this specified concentration interval. On the other hand, LCC directing to the right means the lack of process sources for the process demands. However, for the total network, there is a surplus of

water sources. These special characteristics are unique from this method and cannot easily be found via MRPD or WCA.

### C. Threshold Problem with Zero Fresh Water and Zero Discharge

This special case of threshold problems is rare but realistic. Limiting data, targeting results and LCC for this problem (Example 7) are shown in Table VIII and Fig. 7, respectively.

TABLE VIII: LIMITING DATA AND TARGETING RESULTS FOR EXAMPLE 7

Limiting Data					
Sink	$F_j$ (t/h)	$C_j$ (ppm)	Source	$F_i$ (t/h)	$C_i$ (ppm)
SK1	12	63	SR1	9	108
SK2	10	140	SR2	9	70
SK3	8	63	SR3	4.5	22
SK4	6.5	46	SR4	9	130
SK5	4	130	SR5	9	44
Total	40.5		Total	40.5	

Targeting Results			
$F_{fw}$ (g/min)	$F_{ww}$ (g/min)	$C_{pinch}$ (ppm)	$C_{ww}$ (ppm)
0	0	22	N/A

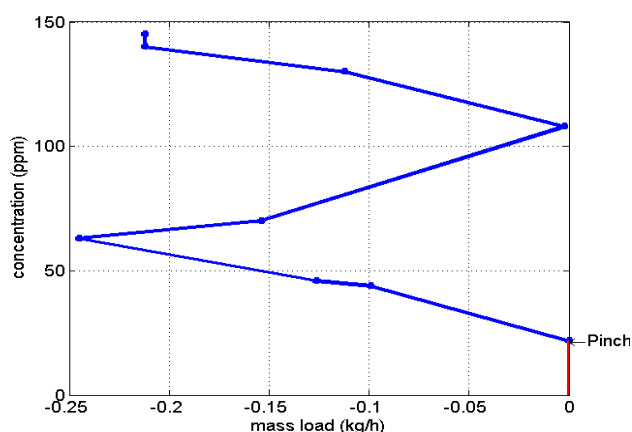


Fig. 7. LCC and water supply line for example 7.

As the characteristics of LCC are the combination of two previous threshold problems, there is no need for further description. For this special case, 100% of fresh water saving and no waste water generating can be achieved. This example seminally was addressed by Hall [20] with the fresh water consumption of 13 ton/h which is a sub-optimal as shown in this work. This problem also has been reported by Foo [19] using MRPD and WCA methods. Here, the applicability of CTA method for this special case is reported. This example is in fact a real case study for organic chemical production.

## VII. CONCLUSION

In this work, Composite Table Algorithm is adopted and programmed for variety of problems in water integration. It is proved that this method can successfully find the target both numerically and graphically. Moreover, as this technique has

been programmed by MATLAB, it can be conveniently and trustfully used for any real, complex, and high integrated process industries.

## REFERENCES

- [1] Y. Wang and R. Smith, "Wastewater minimisation," *Chem. Eng. Sci.*, vol. 49, pp. 981-1006, 1994.
- [2] P. Castro, H. Matos, M. Fernandes, and C. P. Nunes, "Improvements for mass-exchange networks design," *Chem. Eng. Sci.*, vol. 54, pp. 1649-1665, 1999.
- [3] J. G. Mann and Y. A. Liu, *Industrial water reuse and wastewater minimization*, McGraw-Hill Professional, 1999.
- [4] Y. Wang and R. Smith, "Wastewater minimization with flowrate constraints," *Chem. Eng. Res. Des.*, vol. 73, pp. 889-904, 1995.
- [5] Y. Liu, X. Yuan, and Y. Luo, "Synthesis of water utilization system using concentration interval analysis method (I) Non-mass-transfer-based operation," *Chin. J. Chem. Eng.*, vol. 15, pp. 361-368, 2007.
- [6] V. R. Dhole, N. Ramchandani, R. A. Tainsh, and M. Wasilewski, "Make your process water pay for itself," *Chem. Eng.*, vol. 103, 1996.
- [7] M. Sorin and S. Bédard, "The global pinch point in water reuse networks," *Process Safety Environ. Prot.*, vol. 77, pp. 305-308, 1999.
- [8] N. Hallale, "A new graphical targeting method for water minimisation," *Adv. Environ. Res.*, vol. 6, pp. 377-390, 2002.
- [9] M. E. Halwagi, F. Gabriel, and D. Harell, "Rigorous graphical targeting for resource conservation via material recycle/reuse networks," *Ind. Eng. Chem. Res.*, vol. 42, pp. 4319-4328, 2003.
- [10] R. Prakash and U. V. Shenoy, "Targeting and design of water networks for fixed flowrate and fixed contaminant load operations," *Chem. Eng. Sci.*, vol. 60, pp. 255-268, 2005.
- [11] Z. A. Manan, Y. L. Tan, and D. C. Y. Foo, "Targeting the minimum water flow rate using water cascade analysis technique," *AIChE J.*, vol. 50, pp. 3169-3183, 2004.
- [12] A. M. Almutlaq, V. Kazantzi, and M. M. E. Halwagi, "An algebraic approach to targeting waste discharge and impure fresh usage via material recycle/reuse networks," *Clean Technol. Environ. Policy*, vol. 7, pp. 294-305, 2005.
- [13] S. Bandyopadhyay, M. D. Ghanekar, and H. K. Pillai, "Process water management," *Ind. Eng. Chem. Res.*, vol. 45, pp. 5287-5297, 2006.
- [14] V. Agrawal and U. V. Shenoy, "Unified conceptual approach to targeting and design of water and hydrogen networks," *AIChE J.*, vol. 52, pp. 1071-1082, 2006.
- [15] C. Deng, X. Feng, and J. Bai, "Graphically based analysis of water system with zero liquid discharge," *Chem. Eng. Res. Des.*, vol. 86, pp. 165-171, 2008.
- [16] C. Deng and X. Feng, "Targeting for Conventional and Property-Based Water Network with Multiple Resources," *Ind. Eng. Chem. Res.*, 2011.
- [17] G. T. Polley and H. L. Polley, "Design better water networks," *Chem. Eng. progress*, vol. 96, pp. 47-52, 2000.
- [18] D. C. Y. Foo, "State-of-the-art review of pinch analysis techniques for water network synthesis," *Ind. Eng. Chem. Res.*, vol. 48, pp. 5125-5159, 2009.
- [19] D. C. Y. Foo, "Flowrate targeting for threshold problems and plant-wide integration for water network synthesis," *J. Environ. Manage.*, vol. 88, pp. 253-274, 2008.
- [20] S. Hall, "Water and effluent minimisation," in *Symposium papers-institution of chemical engineers north western branch*, 1997, pp. 5-8.



**Reza Parand** was born in Kerman, Iran, 1981, B.Sc., M.Sc. in Mech. Eng. He is currently a PhD student in the Department of Chemical Engineering, Curtin University, Western Australia. He has published more than 10 papers in refereed journals and conferences in the area of energy and resource conservation. His research interest is mathematical modelling, optimization and especially process integration.